

Thermostat for mechanical fuel-injection (MFI)



Features

- Used in EP/RLA-regulators of the mechanical fuel-injection (MFI), e.g. Mercedes-Benz W111, W113 or Aston Martin DBS
- Regulates the fuel-delivery according to the temperature of the cooling water
- replaces:
 - Bosch 1 287 230 002
 - Bosch 1 427 230 011
 - MB 001 203 95 75

Customer Benefits

- high reliability through routine production
- production & assets with genuine assets

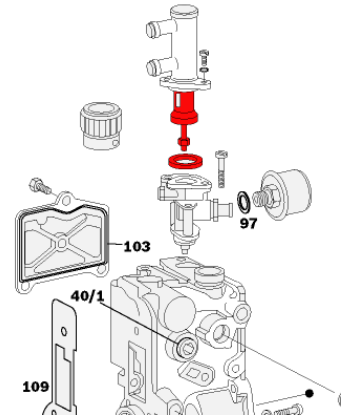
Part number
F 026 T03 038



Thermostat for mechanical fuel-injection (MF¹)

F 026 T03 038 for usage in:

→ EP/RLA 1/5 R	0 428 023 005	Mercedes Benz 300 SE
→ EP/RLA 1/6 R	0 428 023 006	
→ EP/RLA 1/11 R	0 428 023 011	Mercedes Benz 250 SE
→ EP/RLA 1/12 R	0 428 023 012	Mercedes Benz 300 SE
→ EP/RLA 1/17 R	0 428 023 017	Mercedes Benz 280 SE
→ EP/RLA 1/18 R	0 428 023 018	Mercedes Benz 280 SE,280 SL
→ EP/RLA 1/19 R	0 428 023 019	Mercedes Benz 280 SL
→ EP/RLA 1/26 R	0 428 023 026	Mercedes Benz 280 SE
→ EP/RLA 1/27 R	0 428 023 027	Mercedes Benz 280 SL,300 SEL
→ EP/RLA 1/32 R	0 428 023 032	Mercedes Benz 280 SE
→ EP/RLA 1/33 R	0 428 023 033	Mercedes Benz 280 SE
→ EP/RLA 1/34 R	0 428 023 034	Mercedes Benz 280 SL
→ EP/RLA 1/35 R	0 428 023 035	Mercedes Benz 280 SE
→ EP/RLA 1/36 R	0 428 023 036	Mercedes Benz 280 SL
→ EP/RLA 1/37 R	0 428 023 037	Mercedes Benz 280 SE
→ EP/RLA 1/38 R	0 428 023 038	Mercedes Benz 280 SL,300 SEL
→ EP/RLA 1/39 R	0 428 023 039	Aston Martin DBS



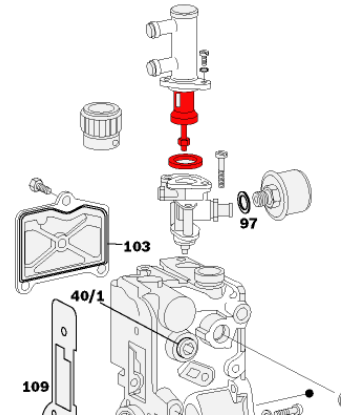
BOSCH

Thermostat for mechanical fuel-injection (MF¹)

F 026 T03 038 for usage in:

- EP/RLA 1/44 R 0 428 023 044
- EP/RLA 1/45 R 0 428 023 045
- EP/RLA 1/46 R 0 428 023 046
- EP/RLA 1/48 R 0 428 023 048
- EP/RLA 1/49 R 0 428 023 049
- EP/RLA 1/50 R 0 428 023 050

Mercedes Benz 280 SE
Mercedes Benz 280 SE
Aston Martin DBS
Mercedes Benz 280 SE



Overview of all relevant part numbers

→ EP/RLA1/5R	0428023 005	Mercedes-Benz 300 SE
→ EP/RLA1/6R	0428023 006	
→ EP/RLA1/11R	0428023 011	Mercedes-Benz 250 SE
→ EP/RLA1/12R	0428023 012	Mercedes-Benz 300 SE
→ EP/RLA1/17R	0428023 017	Mercedes-Benz 280 SE
→ EP/RLA1/18R	0428023 018	Mercedes-Benz 280 SE,280 SL
→ EP/RLA1/19R	0428023 019	Mercedes-Benz 280 SL
→ EP/RLA1/26R	0428023 026	Mercedes-Benz 280 SE
→ EP/RLA1/27R	0428023 027	Mercedes-Benz 280 SL,300 SEL
→ EP/RLA1/32R	0428023 032	Mercedes-Benz 280 SE
→ EP/RLA1/33R	0428023 033	Mercedes-Benz 280 SE
→ EP/RLA1/34R	0428023 034	Mercedes-Benz 280 SL
→ EP/RLA1/35R	0428023 035	Mercedes-Benz 280 SE
→ EP/RLA1/36R	0428023 036	Mercedes-Benz 280 SL
→ EP/RLA1/37R	0428023 037	Mercedes-Benz 280 SE
→ EP/RLA1/38R	0428023 038	Mercedes-Benz 280 SL,300 SEL
→ EP/RLA1/39R	0428023 039	Aston Martin DBS
→ EP/RLA1/44R	0428023 044	Mercedes-Benz 280 SE
→ EP/RLA1/45R	0428023 045	Mercedes-Benz 280 SE
→ EP/RLA1/46R	0428023 046	Aston Martin DBS
→ EP/RLA1/48R	0428023 048	Mercedes-Benz 280 SE
→ EP/RLA1/49R	0428023 049	
→ EP/RLA1/50R	0428023 050	

